



South Heart Public School

---

Calvin Dean, Superintendent  
Scott Jung, Secondary Principal  
Jessica Geis, Elementary Principal  
Kristine Mehrer, Business Manager  
Ronnie Stewart, Activities Director

310 4th St. NW  
PO Box 159  
South Heart, North Dakota 58655  
Phone: 701-677-5671 Fax: 701-677-5616  
[www.southheart.k12.nd.us](http://www.southheart.k12.nd.us)

---

# South Heart Public School

## 2020-21

### HEALTH & SAFETY SMART RESTART PLAN

South Heart School Board Approved  
August 06, 2020  
South Heart School Board Amended  
September 23, 2020  
South Heart School Board Amended  
November 11, 2020

To: South Heart Staff, Parents, Students, and Community:

The presence of COVID-19 in our community, state, nation, and around the world has presented challenges that have not been experienced for over 100 years. Let us begin by offering sincere thanks to all of you for your hard work, dedication, and cooperation over the past 4-5 months and the upcoming months as the 2020-21 school year begins.

On July 14, 2020, Governor Burgum held a press conference notifying schools throughout North Dakota that local decision-making regarding the 2020-21 school year would be allowed (Executive Order 2020-38: <https://www.nd.gov/dpi/policyguidelines/executive-orders/executive-orders-education>). School Boards throughout North Dakota have been given the authority to determine how school will be held during the 2020-21 school year; person-to-person, distance education, or a combination of the two. Prior to the start of the 2020-21 school year, ND School Boards must approve two plans:

- a. Distance Education Plan
- b. Health & Safety Smart Restart Plan: This document is the South Heart School Health and Safety Smart Restart Plan in accordance with ND K12 Smart Restart Guidance 2020-21 <https://www.nd.gov/dpi/parentscommunity/nddpi-updates-and-guidance-covid-19/nd-k12-smart-restart-guidance>

At the July 16, 2020, South Heart School Board meeting, the Board determined the following:

- a. *Philosophically, we feel the best education that can occur is when students and staff are in the school building teaching and learning person-to-person. This scenario maximizes academic success but also provides the necessary social, emotional, and physical development that our students need. **Our ultimate goal is to have school in the building every day as scheduled during the 2020-21 school year.***
- b. *However, COVID-19 presents challenges and concerns that require consideration and planning.*
  1. *It is likely and understandable that some parents will not feel comfortable sending their children to school until a vaccination has been developed.*
  2. *It is likely that staff/students throughout the school year will be asked to self-quarantine due to potential exposure to COVID-19 throughout the school year.*
  3. *It is likely that staff/students may test positive for COVID-19 throughout the school year.*
  4. *It is likely that a partial or full shutdown of South Heart School may occur at some time during the school year, as determined by the South Heart School Board or perhaps statewide by the Governor.*

**Teaching and Learning:** *As we begin the 2020-21 school year, it is our desire to create a teaching/learning platform that will account for all of these scenarios, a blended approach. This approach will include both on-site and distance education occurring simultaneously during the school day.*

**Health and Safety:** *It is our desire to implement a Health and Safety Smart Restart Plan that reflects the desires of our parents, students, and staff and reflects a common sense approach to returning to the school building in such a way that school can be held as “normal” as possible and yet provide health and safety protocols that are reasonable.*

Thank you for reviewing this plan. We encourage everyone to ask questions and communicate their concerns as we move forward. Together, our school will provide quality education to our children in a safe manner.

Respectfully,

Mr. Calvin Dean  
Superintendent

Mr. Randy Kudrna  
School Board President

- Every student should have the opportunity to engage in learning, regardless of the spread of COVID-19 in our community.
- Schools have a vital role in providing safe environments for students, focusing on both social-emotional and physical health.
- By working together with educators, staff, health care professionals, parents, students, and community members we can solve most challenges.
- Our district will make decisions based on the most current guidance from local, state, and national health care officials.
- Our School Board will ensure our plan meets the needs of our students, educators, staff and community.

South Heart School will strive to provide a healthy and safe environment for all who occupy our schools. Despite taking every reasonable precaution, there is no guarantee that South Heart School will be without risk as it relates to COVID-19. The virus will be present on our buses, in our classrooms, and at our activities. In certain situations, social distancing is not possible in a school setting. Our actions, as outlined in this plan, will not prevent any student or staff member from being in contact with the virus. Below is a list of facility related activities that have taken place and will continue throughout the school year:

- **HVAC Cleaning**  
In early August, the HVAC ductwork was professionally cleaned in order to provide the highest level of air quality possible. Additionally, window air conditioners were eliminated and replaced with new energy efficient roof-top air conditioners.
- **Carpets**  
All carpeting and rugs have been professionally cleaned.
- **Painting**  
Large portions of the school have been repainted, especially in the elementary portion of the school where students typically will touch the walls.
- **Tile Floors**  
All the tile floors throughout the school have been scrubbed and re-waxed.
- **Deep Cleaning**  
Every piece of equipment (desks, chairs, lockers, etc) has been thoroughly cleaned and will continue to be cleaned daily and throughout the school year.
- **Hand Sanitizers**  
Hand sanitizer and hand sanitizing wipes will be available in every classroom and hand sanitizing dispensers will be installed in the hallways throughout the school.

- [COVID-19 Exclusion Guidance \(link to guidance\)](#)  
Parents are **STRONGLY** encouraged to follow this guidance EVERY MORNING to determine if their children should attend school on-site. Please click on link above.

## South Heart School COVID-19: Planning Team

South Heart School's Health and Safety Smart Restart Plan was developed by a team consisting of the following:

- Superintendent Calvin Dean
- Elementary Principal Jessica Geis
- Secondary Principal Scott Jung
- Technology Coordinator Kelsey Boedeker
- Southwestern District Health Unit
- School Board Member Barb Meduna
- School Board Member Sarah Ewoniuk
- Teacher Darcy Buerkle
- Teacher Jerica Smith
- Teacher Lynette Silbernagel
- Business Manager Kristine Mehrer

The South Heart School Health and Safety Smart Restart Plan was developed in accordance with guidelines and recommendations provided by:

- Centers for Disease Control and Prevention (CDC)
- North Dakota Department of Health (NDDoH)
- Southwestern District Health Unit (SWDHU)
- North Dakota Department of Public Instruction (DPI)
- North Dakota High School Activities Association (NDHSAA)

## South Heart School COVID-19: Coordinator & Response Team

The following individuals will monitor the District's Health & Safety Smart Restart Plan. These individuals will address the issues of reopening as well as respond and determine necessary action related to COVID-19 issues that may occur throughout the school year.

- **DISTRICT COORDINATOR & COMMUNITY/MEDIA RELATIONS SPOKESPERSON (available 24 hrs/day)**  
This individual serves as the primary contact regarding COVID-19 questions/concerns and also serves as the spokesperson for South Heart Public School. This person will also provide and coordinate all communication to school staff, parents, students, community, district health unit, media, and others.  
**Calvin Dean, Superintendent                      701-677-5671 (school)**
- **COVID-19 RESPONSE TEAM**  
**Calvin Dean, Superintendent**  
**Jessica Geis, Elementary Principal**  
**Scott Jung, Secondary Principal**  
**Ronnie Stewart, Activities Director**  
**Kelsey Boedeker, Technology Director**  
**Barb Meduna, School Board Member**  
**Sarah Ewoniuk, School Board Member**

## South Heart School COVID-19: Communication to Staff/Parents

- **Positive Tests for COVID-19**  
In the event that a student or staff member tests positive for COVID-19, communication to staff and parents will be done via letter from SWDHU with assistance from South Heart Public School. Due to privacy requirements, the identity of the individual testing positive shall be kept confidential. Through contact tracing done by SWDHU, only those individuals KNOWN to have been in close contact or who MAY have been in close contact will receive the letter.

## Parents - Return to School Survey Results (week of July 20, 2020)

### Parents' Survey

(227 responses – note that families may have submitted more than 1 response)

- What grade level will your children be in for the 2020-21 school year?
 

PK	19	8.4%	7 <sup>th</sup>	27	11.9%
K	34	15%	8 <sup>th</sup>	34	15%
1 <sup>st</sup>	29	12.8%	9 <sup>th</sup>	31	13.7%
2 <sup>nd</sup>	36	15.9%	10 <sup>th</sup>	13	5.7%
3 <sup>rd</sup>	39	17.2%	11 <sup>th</sup>	37	16.3%
4 <sup>th</sup>	34	15%	12 <sup>th</sup>	31	13.7%
5 <sup>th</sup>	30	13.2%			
6 <sup>th</sup>	46	20.3%			
- Are you comfortable sending your children to school?
 

87.7%	Yes
12.3%	No
- Please provide your level of support with your child wearing a mask during the academic day.
 

16.7%	I do support
46.3%	I do NOT support
37%	I understand masks may be required depending on the threat level
- Would you support required daily temperature checks of any individual entering the school building?
 

90.7%	Yes
9.3%	No
- Do you have adequate internet availability?
 

93.4%	Yes
6.6%	No
- Do you understand that expectations, attendance, and grading will be consistent whether you attend in-person or online?
 

96.9%	Yes
3.1%	No
- What is your comfort level in supporting your child if distance learning is needed (1=lowest comfort, 5=high comfort)?
 

6.6%	1
10.1%	2
27.8%	3
21.1%	4
34.4%	5
- Do you feel masks should be required if you are utilizing rural bus routes?
 

20.3%	Yes
47.1%	No
32.6%	N/A – my child does not ride the bus
- Are you comfortable with your child participating in school activities?
 

86.8%	Yes
7.9%	No
5.3%	N/A

## School Staff - Return to School Survey Results (week of July 20, 2020)

### Staff Survey

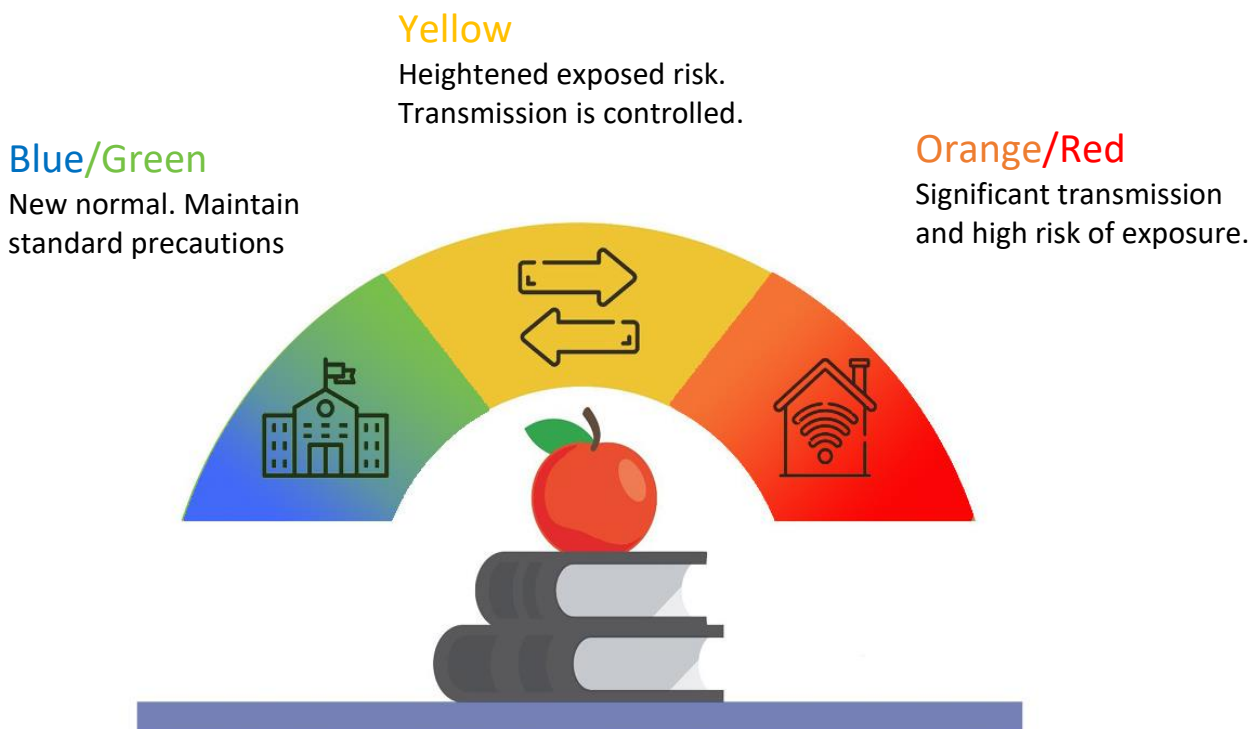
(57 responses)

- Are you comfortable coming to school?  
98.2% Yes  
1.8% No
- Please provide your level of support wearing a mask during the academic day.  
35.1% I do support  
19.3% I do NOT support  
45.6% I understand masks may be required depending on the threat level
- Would you support required daily temperature checks of any individual entering the school building?  
96.5% Yes  
3.5% No
- Do you understand that expectations, attendance, and grading will be consistent whether you attend in-person or online?  
96.5% Yes  
3.5% No
- What is your comfort level in supporting your child if distance learning is needed (1=lowest comfort, 5=high comfort)?  
5.4% 1  
3.5% 2  
45.6% 3  
36.8% 4  
8.8% 5
- How comfortable are you simultaneously teaching on-line and in-person classes (1=lowest comfort, 5=highest comfort)?  
29.8% 1  
19.3% 2  
36.8% 3  
7% 4  
7% 5
- Are you comfortable with coaching/advising school activities?  
40.4% Yes  
7% No  
52.6% N/A

## Risk Level/Color Phases

The following risk level/color phases will be used to define the community/school risk level associated with COVID-19. **The Governor in consultation with the North Dakota Department of Health (NDDoH) determines the color phase of the state or a specific county. Local school districts must follow this directive and cannot make their own determination.** Each level is reported to schools by the North Dakota Department of Health after rigorous testing and assessment of cases in our community.

These phases align with the color-coded guidance in the [ND Smart Restart Plan](#)



The Risk Level/Color Phases noted above and throughout the South Heart School Health and Safety Restart Plan are intended to provide guidance and considerations to the South Heart School Covid-19 Response Team and the South Heart Public School Board. Ultimately, the decision regarding instruction methodology, operational and safety protocols, and extra-curricular activities and school events shall be determined by the South Heart School Covid-19 Response Team and the South Heart Public School Board. Decisions will be based upon Covid-19 data specific to South Heart Public School and not necessarily determined by the Risk Level/Color Phase of the state of North Dakota or Stark County. As always, decisions will be determined by what's best for the students and staff of South Heart School and the South Heart community as a whole. In the event that Stark County is categorized as Orange/Red and substantial school closure and/or school safety measures are to be considered, a special School Board meeting shall be held to determine the course of action.

## Instructional Models

The instructional models used by the district will be guided, in part, by the risk level of COVID-19 in the community as defined within the phases on the previous page. This is a guide as instructional models could be altered based on other factors, such as occupancy levels, age of children, and abilities to move certain classes online.



### Traditional Education

Student instruction is delivered in-person on-site in school with various scheduling, building, and instructional modifications. Safety precautions are implemented to enhance staff and student safety.



### Distance Education

Instruction is provided off-campus through the use of distance learning platforms as noted below and other resources as determined by the school. Options also include enrollment in online courses through the North Dakota Center for Distance Education (paid by the school).

#### South Heart School Distance Learning Platforms

- South Heart Elementary:           PK – 3   Seesaw & Zoom  
  4 - 6    Google Classroom
- South Heart High School:         7 – 12   Google Classroom
- Alternate Platforms as needed:   PK-12   Zoom

As the 2020-21 school year begins, students and parents have the option of attending school via **Traditional Education** or **Distance Education**. Note that various “hands on” classes may not be available to students choosing distance education and may have to choose alternate classes.

- Attendance/Grading/Schoolwork Expectations for Distance Education
  - a. Students and parents choosing to utilize the distance education option are required to follow the school schedule.
  - b. Attendance for students in school and those choosing distance education will be taken and recorded. However, attendance will not be used as a criteria for semester test exemption as students feeling ill are encouraged to stay home in the interest of safety for all students and staff.
  - c. All schoolwork expectations, grading, and eligibility requirements will be consistent with students in the building and those choosing distance education.
  - d. Students and parents choosing to utilize the distance education option may be required to attend school in an isolated setting for state mandated tests and/or classroom quizzes/tests or to receive other services.



## 2020-21 School Calendar & Schedule

- **Guiding Principles:**
    - a. Both on-site traditional education and distance education students will follow the same schedule. This includes students that choose distance education, students that may temporarily have to participate in distance education due to various COVID-19 concerns, or if a partial/full shutdown of school occurs.
    - b. Additional preparation time will be needed by instructional staff to provide distance learning. No on-site instruction on Fridays
    - c. Block scheduling (Grades 7-12) allows for fewer passing times and additional time for cleaning between classes
    - d. Fewer classes each day (Grades 7-12) provides better opportunities for academic success by those students choosing or perhaps required to do distance education
    - e. Schedule allows for smooth transition to partial/full school-wide distance education if necessary
    - f. By students not riding busses and not attending school on-site on Fridays, the risk of exposure to COVID-19 is decreased.
    - g. "Distance Education Fridays" allows instructional staff time to dedicate instructional and preparation time to distance education students.
  - **School Calendar & Schedule:**

The 2020-21 School Calendar still includes 175 days of student instruction with the following modifications. These modifications are in effect until at least the end of the 1<sup>st</sup> semester (Christmas Holiday break). In December, the COVID-19 Response Team will make a recommendation to the School Board regarding the 2<sup>nd</sup> semester calendar and schedule.
- Students that attend school on-site (All grades PK-12) at South Heart School will only be in the school building Monday - Thursday each week. Fridays throughout the calendar have been designated as "Distance Education Fridays."**
- a. Traditional Education (On-Site) Students (All Students PK-12): Face to face instruction at school will occur Monday - Thursday. Although not attending school on-site on Fridays, independent classroom work and assignments may be required of these students. Although these students will not be at school, Fridays are still considered school days.
  - b. Distance Education (Off-site) Students (All Students K-12): Virtual online and/or recorded instruction will be provided when possible to these students Monday - Thursday. Same as on-site students, classwork and assignments will be required of these students Monday - Thursday. Fridays are days that are entirely dedicated to our Distance Education students, either through face-to-face instruction, virtual instruction, or other. Our hope is that we can maximize academic instructional support and services to these students by dedicating an entire day specifically to these students. These days also allow for teachers to have additional instructional prep time dedicated to our distance education students. All South Heart Staff will be working at school on Fridays.
- **School Day:**

The official school day is 8:25 – 3:10 each day per the 2020-21 South Heart School Calendar with the changes noted above for "Distance Education Fridays."

## Home-Schooling vs Traditional/Distance Education

- Traditional education and distance education are the 2 instructional methods that will be used for students that are **ENROLLED** at South Heart Public School. Curriculum and instruction will be provided by South Heart Public School. Students participating in these options will follow the schedule provided by the school.
- **Home-Schooling vs Distance Education:**

Parents who choose Home-Schooling are choosing to **NOT ENROLL** their children at South Heart Public School and therefore curriculum and instruction are not provided by the school and are the responsibility of the parent/guardian. **Note: Parents who choose to NOT ENROLL their child at South Heart School and Home-School their child are required by state law to fill out state mandated paperwork called [STATEMENT OF INTENT HOME EDUCATION](#) and submit to South Heart Public School.**

South Heart High/Junior High School  
2020-2021 Class Schedule

BLUE DAYS (Mondays & Wednesdays)

GOLD DAYS (Tuesdays & Thursdays)

	Period 1 BLUE DAY 8:25-9:55	Period 2 BLUE DAY 10:00-11:30	Period 3 BLUE DAY 11:35-1:35 LUNCH	Period 4 BLUE DAY 1:40-3:10	Period 5 GOLD DAY 8:25-9:55	Period 6 GOLD DAY 10:00-11:30	Period 7 GOLD DAY 11:35-1:35 LUNCH	Period 8 GOLD DAY 1:40-3:10
Ms. Broecker	WORD PROCESSING 9B SPECIAL EDUCATION	TECHNOLOGY COORDINATOR	TECHNOLOGY COORDINATOR	TECHNOLOGY COORDINATOR	TECHNOLOGY COORDINATOR	TECHNOLOGY COORDINATOR	TECHNOLOGY COORDINATOR	TECHNOLOGY COORDINATOR
Mrs. Dean	WORD PROCESSING 9A SPECIAL EDUCATION	SPECIAL EDUCATION	SPECIAL EDUCATION	SPECIAL EDUCATION	SPECIAL EDUCATION	SPECIAL EDUCATION	SPECIAL EDUCATION	SPECIAL EDUCATION
Mrs. Delvo	PHYSICAL SCIENCE 9A	PHYSICAL SCIENCE 9B	PHYSICAL SCIENCE 9B	EARTH SCIENCE 8B	BIOLOGY 10A	BIOLOGY 10B	EARTH SCIENCE 8A	STEM 7/8 STEM 7/8
Mrs. Dockler	ELEMENTARY MUSIC	ELEMENTARY MUSIC	ELEMENTARY MUSIC	ELEMENTARY MUSIC	ELEMENTARY MUSIC	STUDY HALL	STUDY HALL	STUDY HALL
Mrs. Gordon	ELEMENTARY MUSIC	ELEMENTARY MUSIC	ELEMENTARY MUSIC	ELEMENTARY MUSIC	WORLD HISTORY 8B	GEOGRAPHY 7B		CURRENT EVENTS (9A) CURRENT EVENTS (9B)
Mr. Gordon	WORLD HISTORY 8B	WORLD HISTORY 10A	GEOGRAPHY 7A	WORLD HISTORY 8A	WORLD HISTORY 10B	GEOGRAPHY 7B		JOURNALISM (9-12)
Mrs. Hedinika	LIBRARY LIBRARY	LIBRARY LIBRARY	HONORS ENGLISH 11	STUDY HALL	HONORS SPEECH (12) STUDY HALL	LIBRARY LIBRARY		JOURNALISM (9-12)
Ms. Kuntz	ENGLISH 7A	ENGLISH 1	ENGLISH III 11	ENGLISH 7B	ENGLISH 12		ENGLISH I 9A	CREATIVE WRITING (9B) CREATIVE WRITING (9A)
Ms. Lefler	HEALTH 10B HEALTH 10A	Health 8A Health 8B	FACS II 10	FACS I 9	FACS 7/8 FACS 7/8		FOOD PREP (10-12) FOOD PREP (10-12)	FOOD PREP (10-12) FOOD PREP (10-12)
Mrs. Lengowski	MATH 7B	MATH 8A	MATH 8A	GEOMETRY 10	PRE-ALGEBRA 9	MATH 8B	MATH 7A	CULTURE/CURSING (10-12) COMPUTERS 7/8
Mr. Mann	SPREADSHEETS 10A SPREADSHEETS 10B	POD 12B HONORS POD	ACCOUNTING I (12) ACCOUNTING II (12)		COMPUTERS 7/8 COMPUTERS 7/8	BUSINESS FUND. 9A BUSINESS FUND. 9B	STUDY HALL (7-9)	FINANCE 7/8 FINANCE 7/8
Ms. Reinhalter	ND STUDIES 9A ND STUDIES 9B	HONORS POD (DC) POD 12 B	STUDY HALL	US HISTORY 11	HONORS US HISTORY I (DC) HONORS US HISTORY II (DC)		PSYCHOLOGY 11-12 SOCIOLOGY 11-12	PSYCHOLOGY 10-12 SOCIOLOGY 10-12
Mrs. Robb	SPECIAL EDUCATION	SPECIAL EDUCATION	SPECIAL EDUCATION	SPECIAL EDUCATION	SPECIAL EDUCATION	SPECIAL EDUCATION	SPECIAL EDUCATION	SPECIAL EDUCATION
Ms. Schalk	ENGLISH 8A ENGLISH 8B	ENGLISH 8B	ENGLISH 8B	AP ENGLISH 12		MASS MEDIA (10-12)	ENGLISH II 10A SPEECH 10A	STUDY SKILLS 7/8 STUDY SKILLS 7/8
Ms. Schweigert	SIXTH GRADE SIXTH GRADE	FIFTH GRADE FIFTH GRADE	FIFTH GRADE FIFTH GRADE	STUDY HALL	56 BAND 56 BAND	STRINGS 12 STRINGS 12	BAND (7-12) BAND (7-12)	CHOIR (9-12) CHOIR (9-12)
Mrs. Silbernagel	CHEMISTRY 11	Health 7A Health 7B	LIFE SCIENCE 7B	ANATOMY I (11-12) MED TERMS (DC) (11-12)	APPLIED BIOLOGY APPLIED-CHEMISTRY	LIFE SCIENCE 7A		STEM 7/8 STEM 7/8
Ms. Sparks		ART II 11	Art II 10	ART I 9	ART 7/8 ART 7/8	DRAWING (11-12) PAINTING (11-12)	SCULPTURE SCULPTURE	COMMUNITY DEVELOPMENT (10-12)
Mr. Stewart	ELEMENTARY PHY. ED. ELEMENTARY PHY. ED.	PHY. ED 7/8 B PHY. ED 7/8 A	ELEMENTARY PHY. ED. ELEMENTARY PHY. ED.	ACTIVITIES DIRECTOR	ACTIVITIES DIRECTOR	ACTIVITIES DIRECTOR		WEIGHTS (9-12) COMMUNITY DEVELOPMENT (10-12)
Mrs. Swann	AG TECHNOLOGY I (11-12) WELDING (12)	AG EDUC III 11	AG EDUC II 10	AG EDUC I 9	AG EDUC 7/8 ALGEBRA 1 9		EQUINE SCIENCE (11-12) BOTANY (11-12)	COMMUNITY DEVELOPMENT (10-12) CONSUMER MATH (10-12)
Mr. Tomaszky	COLLEGE ALGEBRA (DC) ELEMENTARY STATS (DC)		TRIGONOMETRY (DC) CALCULUS (DC)	ALGEBRA I 10	ALGEBRA I 9		APPLIED GEOMETRY (10-12)	CONSUMER MATH (10-12)
Mr. Watson	ELEMENTARY PHY. ED. ELEMENTARY PHY. ED.	ELEMENTARY PHY. ED. ELEMENTARY PHY. ED.	ELEMENTARY PHY. ED. ELEMENTARY PHY. ED.	ELEMENTARY PHY. ED. ELEMENTARY PHY. ED.	ELEMENTARY PHY. ED. ELEMENTARY PHY. ED.	PHY. ED 9B PHY. ED 9A	INDIVIDUAL & DUAL SPORTS (10-12)	SPORTS OFFICIATING (10-12) INTRO TO COACHING (10-12)

## Blue / Green Color Phase – Guidance & Safety

### Operational Guidance & Safety Protocols

- **Technology Training**

Students (and parents when necessary) will be trained within the first 2-3 weeks of school by classroom teachers on how to use distance learning platforms

- **Outdoor Instruction:**

Weather permitting: Teachers are encouraged to provide instruction outdoors to maximize fresh air and social distancing

- **Pods**

Sections of classes in grades 7-12 will be grouped into pods as much as possible to minimize contact with other students

- **Bussing (Rural Bus Routes):**

Masks are optional, temperature will not be taken. Seating charts shall be created so that families sit together, and other students consistently sit next to the same students daily. Students not assigned to a specific route are not permitted to ride the bus at any time.

Cleaning – Bus seats, handles, etc will be cleaned and sanitized after every trip (2 times per day for routes)

- **Masks:**

Masks are optional (not provided by school) in school during the academic day – if worn, must be school-appropriate as determined by school administration. **Exception: Students in high school choir and elementary music classes will be required to wear masks while singing (masks provided by school).** Students and staff are encouraged to wear masks or other face coverings any time social distancing is not possible.

- **Visitors:**

All visitors (including parents, vendors, etc) are required to wear a mask upon entering South Heart School during the school day. Parents should only enter the school to attend a prior-arranged meeting or to take care of business at the school office.

- **Before and After School:**

Parents are NOT permitted to enter the school either before or after school while dropping off or picking up children, unless the parent needs to sign out their child at some point during the school day. Please wait outside.

- **Morning Health Checks:**

Every morning before school, parents/guardians are asked to follow [COVID-19 Exclusion Guidance](#) provided by the North Dakota Department of Health to determine if their children should attend school on-site or stay home for the day. Please do not send your child to school if not feeling well. It's extremely important for everyone's safety!

- **Arrival at School:**

Upon arriving at school (absolutely no earlier than 8:00 am), students are required to immediately report to their classroom or their first class of the day. Loitering in the hallways is not permitted. After reporting to the classroom and after having their temperature checked, students wishing to have breakfast will then be permitted to leave the classroom and eat breakfast in the lunchroom. If not having breakfast, students must stay in the classroom.

- **Temperature Checks:**

All individuals (staff, students, and visitors) shall have temperature checks upon entering the school. Any individual with a temperature of 100.4 or above may not be admitted.

- **Passing Time Procedures:**

Staggered and number of class changes are reduced with block scheduling. Weather permitting: Students will be encouraged to go outside and get fresh air

- **Classroom Cleaning:**

Cleaned/disinfected by teachers and students (when appropriate) between classes and extensively after school by custodians

- **Social Distancing:**

Minimum of 6 feet will be emphasized and maximized as possible at all times throughout entire building, including classrooms as possible – may be limited in certain areas

- **Seating Charts:**

Seating charts shall be utilized and provided to the District COVID-19 Coordinator (Supt) for rural bus route, classrooms, breakfast, lunch, etc to assist with contact tracing if needed

- **Lunch:**

Held in the elementary gym as normal, but tables and students will be spread out to maximize social distancing. Meals will NOT be provided to students choosing distance education.

- **Common Areas:**

Routinely cleaned and disinfected by custodial staff, especially high touch/traffic areas and extensively after school by custodians

- **Water fountains:**

Water bottle filler available only – please bring water bottle

- **Sharing:**

Sharing of water bottles, food, and other materials/supplies is not permitted. Students are not permitted to bring classroom treats to school to share with others (for example, birthday parties)

- **Handwashing:**

Handwashing breaks will be integrated throughout the day

- **Hand Sanitizer and Hand Sanitizing Wipes:**

Available in all classrooms and common areas

- **Recess:**

Weather permitting, recess will be held outside as fresh air and exercise will be encouraged

<p><b>Extracurricular Activities &amp; School Events</b></p>	<ul style="list-style-type: none"> <li>● <b>NDHSAA and other Interscholastic School Sponsored Activities:</b> Guidance and directives from the North Dakota High School Activities Association (NDHSAA) and other governing boards will be used to guide these activities (provided)</li> <li>● <b>Heart River Fall Sports:</b> Except for regional and state varsity-level tournaments, Heart River will not be attending or hosting any multi-team events, including tournaments, triangulars, etc. This is an agreement that all region schools have agreed upon and will implement. Fan attendance may be limited depending on capacity of facility as determined by host and visiting schools.</li> <li>● <b>Heart River Winter &amp; Spring Sports:</b> TBD prior to seasons</li> <li>● <b>School Events (music concerts, drama, etc):</b> Guidance and attendance at school events, assemblies, and other gatherings will be determined and communicated on a case by case basis</li> <li>● <b>School Access:</b> Access to the inside of the building (other than fitness room) by the community shall not be permitted except for school-sponsored events</li> <li>● <b>Waiver:</b> By participating in school activities, parents and students acknowledge that social distancing and the wearing of masks will likely not be possible, therefore assuming additional risk to being exposed to COVID-19. A waiver will be required of all participants in athletics and activities, available from Activities Director.</li> </ul>
--	--

## Yellow Color Phase – Guidance & Safety

### Operational Guidance & Safety Protocols

- **Targeted Closures:**

Based upon identified COVID-19 cases of students and staff, targeted closures may be implemented (class, grade, elementary, secondary, etc). Some students may be required to stay home and utilize distance education while others attend school in person

- **Technology Training:**

Students (and parents when necessary) will be trained within the first 2-3 weeks of school by classroom teachers on how to use distance learning platforms

- **Outdoor Instruction:**

Weather permitting: Teachers are encouraged to provide instruction outdoors to maximize fresh air and social distancing

- **Pods**

Sections of classes in grades 7-12 will be grouped into pods as much as possible to minimize contact with other students

- **Bussing (Rural Bus Routes):**

Based upon identified COVID-19 cases of students and staff, rural bus routes may not be used. When possible, parents are encouraged to consider alternate transportation to school as social distancing on busses may be very difficult to achieve. Masks may be required (not provided by the school), temperature will not be taken. Seating charts shall be created so that families sit together, and other students consistently sit next to the same students daily. Students not assigned to a specific route are not permitted to ride the bus at any time.

Cleaning – Bus seats, handles, etc will be cleaned and sanitized after every trip (2 times per day for routes)

- **Masks:**

Masks may be required (not provided by school) in school during the academic day – must be school-appropriate as determined by school administration. **Exception: Students in high school choir and elementary music classes will be required to wear masks while singing (masks provided by school).** Students and staff are encouraged to wear masks or other face coverings any time social distancing is not possible.

- **Visitors:**

All visitors (including parents, vendors, etc) are required to wear a mask upon entering South Heart School during the school day. Parents should only enter the school to attend a prior-arranged meeting or to take care of business at the school office.

- **Before and After School:**

Parents are NOT permitted to enter the school either before or after school while dropping off or picking up children, unless the parent needs to sign out their child at some point during the school day. Please wait outside.

- **Morning Health Checks:**

Every morning before school, parents/guardians are asked to follow [COVID-19 Exclusion Guidance](#) provided by the North Dakota Department of Health to determine if their children should attend school on-site or stay home for the day. Please do not send your child to school if not feeling well. It's extremely important for everyone's safety!

- **Arrival at School:**

Upon arriving at school (absolutely no earlier than 8:00 am), students are required to immediately report to their classroom or their first class of the day. Loitering in the hallways is not permitted. After reporting to the classroom and after having their temperature checked, students wishing to have breakfast will then be permitted to leave the classroom and eat breakfast in the lunchroom. If not having breakfast, students must stay in the classroom.

- **Temperature Checks:**

All individuals (staff, students, and visitors) shall have temperature checks upon entering the school. Any individual with a temperature of 100.4 or above may not be admitted. Multiple checks may occur during the day.

- **Passing Time Procedures:**

Staggered and number of class changes are reduced with block scheduling. Weather permitting: Students will be encouraged to go outside and get fresh air

- **Classroom Cleaning:** Cleaned/disinfected by teachers and students (when appropriate) between classes and extensively after school by custodians

- **Social Distancing:**

Minimum of 6 feet will be emphasized and maximized as possible at all times throughout entire building, including classrooms as possible – may be limited in certain areas

- **Seating Charts:**

Seating charts shall be utilized and provided to the District COVID-19 Coordinator (Supt) for rural bus route, classrooms, breakfast, lunch, etc to assist with contact tracing if needed

- **Lunch:**

May be held in the elementary gym as normal or students may be required to return to classrooms to eat lunch to maximize social distancing. If held in gymnasium, tables and students will be spread out to maximize social distancing – other scheduling adjustments may also be made. Meals will NOT be provided to students choosing distance education.

- **Common Areas:**

Routinely cleaned and disinfected by custodial staff, especially high touch/traffic areas and extensively after school by custodians

- **Water fountains:**

Water bottle filler available only – please bring water bottle

- **Sharing:**

Sharing of water bottles, food, and other materials/supplies is not permitted

- **Handwashing:**

Handwashing breaks will be integrated throughout the day

- **Hand Sanitizer and Hand Sanitizing Wipes:**

Available in all classrooms and common areas

	<ul style="list-style-type: none"> <li>● <b>Recess:</b> Weather permitting, recess will be held outside as fresh air and exercise will be encouraged – However, classrooms may be isolated from each other to certain areas to increase social distancing</li> </ul>
<p><b>Extracurricular Activities &amp; School Events</b></p>	<ul style="list-style-type: none"> <li>● <b>NDHSAA and other Interscholastic School Sponsored Activities:</b> Guidance and directives from the North Dakota High School Activities Association (NDHSAA) and other governing boards will be used to guide these activities (provided)</li> <li>● <b>Heart River Fall Sports:</b> Except for regional and state varsity-level tournaments, Heart River will not be attending or hosting any multi-team events, including tournaments, triangulars, etc. This is an agreement that all region schools have agreed upon and will implement. Fan attendance will likely become more restrictive and potentially not allowed.</li> <li>● <b>Heart River Winter &amp; Spring Sports:</b> TBD prior to seasons</li> <li>● <b>School Events (music concerts, drama, etc):</b> Guidance and attendance at school events, assemblies, and other gatherings will be determined and communicated on a case by case basis</li> <li>● <b>School Access:</b> Access to the inside of the building (other than fitness room) by the community shall not be permitted except for school-sponsored events</li> <li>● <b>Waiver:</b> By participating in school activities, parents and students acknowledge that social distancing and the wearing of masks will likely not be possible, therefore assuming additional risk to being exposed to COVID-19. A waiver will be required of all participants in athletics and activities, available from Activities Director.</li> </ul>



# Orange / Red Color Phase

<p><b>Instructional Model</b></p>	<ul style="list-style-type: none"> <li>● <b>Distance Education</b> <ol style="list-style-type: none"> <li>a. All students may participate in Distance Education using the previously defined distance education learning platform. Scheduling modifications may be made as needed</li> <li>b. Technology needs will be communicated and provided to all students similar to Spring of 2020</li> <li>c. Small group meetings or instruction on-site may be allowed as determined by the administration, particularly for specials needs students or students receiving services, EL students, academic interventions, or other as needed</li> <li>d. Attendance will be taken and recorded per the class schedules; schoolwork expectations, grading, and eligibility requirements will remain the same</li> <li>e. Staff may be expected to report to school and provide distance education to students from school, except for extenuating circumstances.</li> </ol> </li> </ul>
<p><b>Operational Guidance &amp; Safety Protocols</b></p>	<ul style="list-style-type: none"> <li>● <b>School Access:</b> To prevent the spread of COVID-19 in the community, the school building may be closed. Only when permitted for reasons as noted above will access be granted as determined by the administration. Essential staff, as identified by the school administration, may also be permitted to enter. The school fitness room may be closed to staff, students, and the public</li> <li>● <b>Food Service:</b> Local food distribution may be implemented by food service program if and when approved by the Department of Agriculture and the North Dakota Department of Public Instruction (similar to Spring 2020)</li> </ul>
<p><b>Extracurricular Activities &amp; School Events</b></p>	<ul style="list-style-type: none"> <li>● <b>NDHSAA and other Interscholastic School Sponsored Activities:</b> Guidance and directives from the North Dakota High School Activities Association (NDHSAA) and other governing boards will be used to guide these activities. These events may be suspended or canceled.</li> <li>● <b>School Events (music concerts, drama, etc):</b> These events may be suspended or canceled based upon guidance.</li> <li>● <b>Waiver:</b> By participating in school activities, parents and students acknowledge that social distancing and the wearing of masks will likely not be possible, therefore assuming additional risk to being exposed to COVID-19. A waiver will be required of all participants in athletics and activities, available from Activities Director.</li> </ul>

West River Student Services  
Special Populations (IEP, 504, English Learners, etc)

The needs of students in special populations, such as those on an IEP/504 plan, those requiring English Learner or other services, will be met through a variety of strategies adapted to the unique needs of each child. Students in these populations may be provided additional services and supports, daily in-person instruction, small grouping, or other strategies that best address academic, social, and health and safety needs. Families with students in special populations should contact their building principal and/or case manager to discuss these options and to appropriately plan for their child’s instructional model.

Following guidance our case managers will be in contact with each IEP student’s parent/guardian and required team member to plan for services and accommodations. Plans will be made for continuation of services within a “Services at school” and “Services Online” model to be prepared for both scenarios. The following is a service standard, for students on IEP’s, and maybe adapted for 504 plans and those needing specialized services such as English Language Learners.

The following is outlined below to assure that every student receives the individual services outlined in the student’s Individual Education Plan.

Blue/Green	In Person (on campus)	Distance Learning
<b>Providing Services (FAPE)</b>	Services provided based on individual needs on IEP.	Distance Learning Plan based on individual needs on IEP.
<b>IEP Meetings</b>	Meetings have the option of taking place in person in the building or through virtual means (phone, zoom, etc)	Meetings will take place through virtual means.
<b>Assessments</b>	WRSS will complete evaluations/assessment within the 60 day IDEA guideline	WRSS will complete evaluations/assessment within the 60 day IDEA guideline. The evaluation team will determine the best method of assessment (e.g. virtual or face-to-face).

***\*When a student and parent chooses Distance Learning or has to stay home due to COVID-19, the student’s IEP team will review the student’s current IEP and create and consider a contingency plan and determine if a change in placement is needed/appropriate.***

<b>Yellow</b>	In Person (on campus)	Distance Learning
<b>Providing Services (FAPE)</b>	Services provided based on individual needs on IEP and District's Restart Plan will determine student's method of instruction	Distance Learning Plan based on individual needs on IEP.
<b>IEP Meetings</b>	The District's Restart Plan will determine the method of holding IEP meetings. Meetings have the option of taking place in person in the building or through virtual means (phone, zoom, etc)	Meetings will take place through virtual means
<b>Assessments</b>	WRSS will complete evaluations/assessment within the 60 day IDEA guideline. The assessment team in collaboration with the District's Restart Plan will determine the method of how assessments will be given (e.g. virtual vs. face-to-face) and the location.	WRSS will complete evaluations/assessment within the 60 day IDEA guideline. The assessment team in collaboration with the District's Restart Plan will determine the method of how assessments will be given (e.g. virtual vs. face-to-face) and the location.

***\*When a student and parent chooses Distance Education or has to stay home due to COVID-19, the student's IEP team will review the student's current IEP and create and consider a contingency plan and determine if a change in placement is needed/appropriate.***

<b>Orange/Red</b>	In Person (on campus)	Distance Learning
<b>Providing Services (FAPE)</b>	Services will cease in person as determined by the District's Restart Plan and in collaboration with District administration. Service methods: will be virtual only. All Services shift to Online learning	Distance Learning Plan based on individual needs on IEP.
<b>IEP Meetings</b>	All meetings in this phase will be done through phone calls, and /or virtual setting	Meetings will take place through virtual means
<b>Assessments</b>	WRSS will make efforts to complete evaluations/assessment within the 60 day IDEA guideline. The assessment team in collaboration with the District's Restart Plan will determine how assessments will be done virtually. Three year reevaluations should consider all options available to the school districts and WRSS.	WRSS will make an effort to complete evaluations/assessment within the 60 day IDEA guideline. The assessment team in collaboration with the District's Restart Plan will do assessments virtually.

***IEP team will review the student's current IEP and create and consider a contingency plan and determine the appropriate services.***

### ● Resources

Center for Disease Control and Prevention (CDC)

<https://www.cdc.gov/coronavirus/2019-nCoV/index.html>

North Dakota Department of Health (NDDoH)

<https://www.health.nd.gov/diseases-conditions/coronavirus>

Southwestern District Health Unit (SWDHU)

<https://swdhu.net/>

North Dakota Department of Public Instruction (DPI)

<https://www.nd.gov/dpi/parentscommunity/nddpi-updates-and-guidance-covid-19>

North Dakota High School Activities Association (NDHSAA)

<https://ndhsaa.com/>

### ● Protect Yourself and Others

#### *Wash your hands often*

- Wash with soap and water for at least 20 seconds especially after blowing your nose, coughing, or sneezing.
- If soap and water are not available, use hand sanitizer that contains at least 60% alcohol.
- Avoid touching your eyes, nose, and mouth with unwashed hands.
- Students are encouraged to wash their hands often throughout the day.

#### *Avoid close contact*

- Exercise social distancing from others especially if you are at a higher risk of getting sick.
- If social distancing is not possible, strongly consider wearing a mask.

#### *Cover coughs and sneezes*

- Always cover your mouth and nose with a tissue when you cough or sneeze or use the inside of your elbow.
- Throw tissues away and immediately wash hands or use hand sanitizer to prevent spread.

#### *Clean and disinfect*

- Regularly clean and disinfect your home and all other areas in which you have contact

#### *Cover your mouth and nose with a cloth face cover when around others.*

- Consider wearing masks when around others that are not direct family members

#### *Monitor your health daily*

- Be alert for symptoms. Watch for a fever, cough, or shortness of breath.
- Parents are asked to screen their children each day before sending them to school. Use the screening guidance provided.
- Staff and students who are sick should stay home.
- Symptomatic students will be isolated, and their parents/guardians contacted.

## Monitoring Student & Staff Health

Monitoring the health of students and staff will be an important component of a safe and healthy educational environment. South Heart School will take the following measures to ensure all students and staff are healthy while they are at school.

### *Identifying Students & Staff at Higher Risk*

- Parents who have a child whose health may be more seriously at-risk if that child contracts COVID-19, based on a health professionals' diagnosis, are asked to notify the School so school staff can closely monitor that child's health and communicate potential concerns through the school year.
- Employees whose health may be more seriously at-risk if contracting COVID-19, based on a health professionals' diagnosis, are asked to notify the COVID-19 Coordinator (Superintendent). The Superintendent will work closely with employees in providing the safest work environment possible.

### *Isolation & Quarantine*

- South Heart School will follow isolation, quarantine, and exclusion guidelines and directives as set by the North Dakota Department of Health and Southwest District Health Unit.

### *If a Student/Staff member becomes sick or is symptomatic at school (or school event)*

- Student Sick or Symptomatic
  - Direct / escort the child to the Elementary Principal's Office (Grades PK-6) or Superintendent's Office (Grades 7-12)
  - The child and the attending adult shall be provided facial coverings and isolated from other staff/students until parent/guardian arrives
  - Parent / guardian will be contacted to pick up their child.
- Staff Sick or Symptomatic
  - Immediately inform your supervisor and wear a face mask / shield until you can be replaced if supervising students at that time.
  - Leave the school building/grounds and consult with a health care professional.

### *Return to School*

- When a student or staff member has been isolated or quarantined as directed by the NDDoH, SWDHU, or a health care provider, they will only be allowed to return to school after being cleared by the NDDoH, SWDHU, or a health care provider except under the following conditions:

#### Essential Employees

Per CDC, NDDoH, and NDSBA guidance, ALL South Heart School staff (including contracted rural bus route drivers) are Essential Employees and permitted to return to work while under quarantine (including household and non-household close contacts) provided:

- a. Employee remains ASYMPTOMATIC
- b. PRE-SCREENING is conducted DAILY by employer
- c. Employee REGULAR MONITORS themselves for symptoms
- d. Employee WEARS A MASK at ALL times while at school
- e. Employee maintain SOCIAL DISTANCING of at least 6 feet at ALL times
- f. Employee DISINFECTS AND CLEANS WORK-SPACE including common areas such as bathrooms, etc

### *Staff/Parent Communication if a Staff Member/Student Tests Positive for COVID-19*

- In the event that a student or staff member tests positive for COVID-19, communication to staff and parents will be done via letter from SWDHU with assistance from South Heart Public School. Due to privacy requirements, the identity of the individual testing positive shall be kept confidential. Through contact tracing done by SWDHU, only those individuals KNOWN to have been in close contact or who MAY have been in close contact will receive the letter.

### Additional Resources

#### *North Dakota Department of Health (NDDoH) (documents are linked below)*

- [Differences: Physical Distancing, Quarantine, and Isolation](#)
- [COVID-19 Recommendations for Schools](#)
- [COVID-19 Close Contacts in Child Care/School Settings](#)
- [COVID-19 Exclusion Guidance](#)

PARENTS ARE **STRONGLY** ENCOURAGE TO FOLLOW THIS GUIDANCE EVERY MORNING TO DETERMINE IF THEIR CHILD(REN) SHOULD ATTEND SCHOOL ON-SITE

#### *North Dakota High School Activities Association (NDHSAA) (document is linked below)*

- [NDHSAA Guidelines and Recommendations for Opening Sports/Activities](#)